

## HEADLINE FIGURES

### PEDW Statistics - Data for the period 1st April 2019 to 31st March 2020

#### NHS Hospital Admitted Patients – Betsi Cadwaladr University Health Board Residents.

### Summary

The annual PEDW data tables present analyses of the Patient Episode Database for Wales (PEDW) which is collated, validated and stored by the NHS Wales Informatics Service (NWIS) on behalf of the Welsh Government and the NHS in Wales. It is a rich source of information about patients admitted to hospitals in Wales. Data is based on 'Finished Consultant Episodes' (FCEs). Episodes describe the time a patient spends in the continuous care of one consultant within a provider spell. A provider spell is the continuous period of time that a patient spends in the care of one NHS health care provider (Local Health Board). The care starts with an admission episode and ends in discharge, transfer to another NHS provider or death. When the responsibility for a patient transfers from one consultant to another within a provider spell, one consultant episode will end and another one begins. However, in approximately 90% of cases, the provider spell consists of just one consultant episode.

### Key Facts<sup>1</sup>

#### In 2019/20:

- There were 224,800 Finished Consultant Episodes (FCEs) recorded, an increase in activity of 1.4% on 2018-19. Over the five years 2015-16 to 2019-20 FCE activity has risen by 4.4%.
- Of these, 193,700 were admission episodes (the first in a spell), a small increase of 1% (2,100) on the previous year. The number of admission episodes have increased over the five years 2015-16 to 2019-20 by 5.2%.
- Emergency admissions continue to rise this year with emergencies representing 47.9% of all admissions and making up the majority of admissions for Betsi Cadwaladr University Health Board residents. There were 92,800 emergencies this year compared to 90,900 in 2018-19, an increase of 2.1% and a 12.7% increase since 2015-16.
- 73,600 admissions were from waiting lists (including booked admissions), down slightly by 1% on the previous year.
- 65% (146,100) of all FCEs were ordinary inpatient episodes, 31% (69,200) were day case episodes.
- 55.7% of all FCEs (94.2% of day case episodes) involved some form of procedure or intervention.
- 29,100 admissions for Betsi Cadwaladr University Health Board Residents took place outside of Wales in non-Welsh providers representing 15% of all admissions.

---

<sup>1</sup> Figures in the Key Facts have been rounded to the nearest hundred. Percentage calculations are based on the un-rounded figures.

## Data Quality

**Primary diagnosis coding completeness:** This data was extracted from the PEDW database in September 2020. The clinical coding section of the APC Data Quality Status report advises that four organisations (BCU, Powys, Swansea Bay and Velindre) met both clinical coding completeness targets. C&V met the national standard of 95% coded within 3 months of episode end date but failed to achieve the 98% target for rolling 12 months' data, while the other three organisations (Aneurin Bevan, Cwm Taf Morgannwg and Hywel Dda) did not meet either target.

**Treatment specialty re-coding:** From April 2016, new codes were introduced for describing specialties to add more detail to data collections. Currently, not all health boards are reporting this data consistently using the more detailed codes. For this publication, treatment specialties have been recoded as their previous description to avoid inconsistent reporting.

## Publication Links

- PEDW Data on-line [Notes and definitions](#)
- [2019/20 Data Quality Report](#)
- [NHS Wales Data Dictionary](#)

## Trends

Charts 1 and 2 have been included to provide an indication of the trend for some of the key facts noted above (2015-16 to 2019-20). Data for years other than the latest year have been taken from previous publications.

**Chart 1: Number of FCEs and admission episodes 2015-16 to 2019-20**

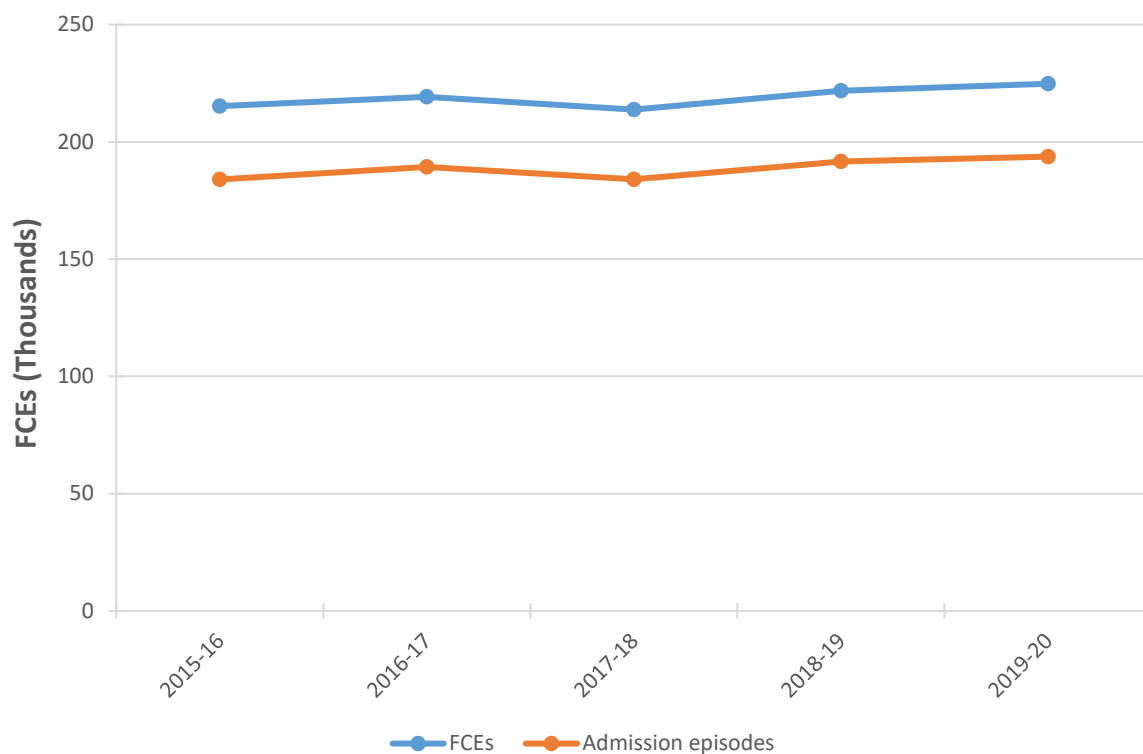


Chart 1 shows the volume of episodes and admission episodes each year. Admission episodes are the first episode within a spell of care. Both FCEs and admission episode activity have increased in the last two years following a drop in 2017-18. Over the five years, there has been an overall 4.4% increase in FCE activity and an overall 5.2% rise in admission episode activity. The gap between FCEs and admission episodes has been similar between 2015-16 and 2019-20 indicating that the proportion of spells having just one, or two or more FCEs within the spell of care has remained relatively consistent over that time period.

**Chart 2: Number of admission episodes by admission method 2015-16 to 2019-20**

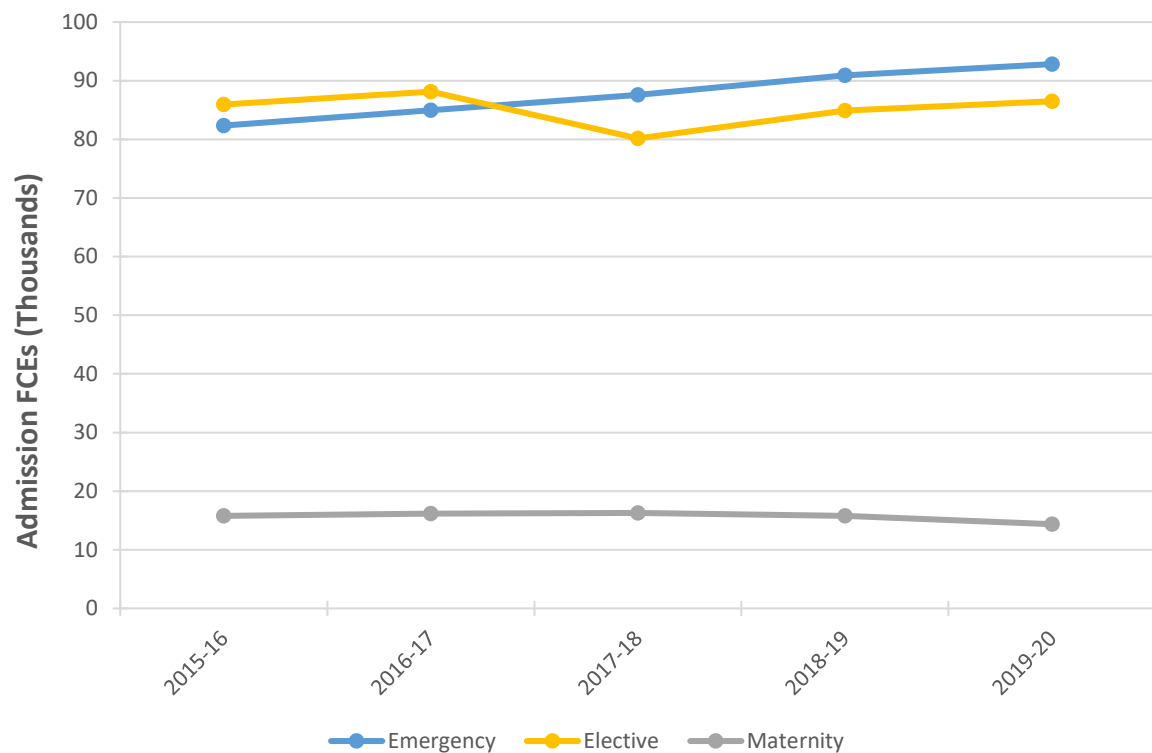


Chart 2 shows the volume of admission episodes split by admission method over time. Emergency admissions made up the majority of admissions (47.9%) and have increased year-on-year over the last five years with 82,300 admissions in 2015-16 compared to 92,800 admissions in 2019-20, a rise of 12.7%. Elective admissions make up 44.7% of admissions and admissions have increased over the past two years following a drop in 2017-18. Maternity admissions were down by 9% in the latest year and have reduced by 9% overall over the past 5 years.

## HEADLINE FIGURES

PEDW Statistics - Data for the period 1st April 2019 to 31st March 2020

NHS Hospital Admitted Patients - Betsi Cadwaladr University Health Board Residents

### Finished Consultant Episodes - FCEs (excl. Regular Attender episodes )

<b>Total</b>	<b>224,770</b>	<b>100.0%</b>
Proportion of the above episodes with a procedure or intervention:	55.7%	

### FCEs by Patient Classification

<b>Inpatient FCEs</b>	<b>146,057</b>	<b>65.0%</b>
Proportion of the above episodes with a procedure or intervention:	38.3%	
<b>Day Case FCEs</b>	<b>69,236</b>	<b>30.8%</b>
Proportion of the above episodes with a procedure or intervention:	94.2%	
<b>Mothers Using Delivery Facilities Only: FCEs</b>	<b>9,477</b>	<b>4.2%</b>
<b>Patient Classification Unknown: FCEs</b>	<b>0</b>	<b>0.0%</b>

### FCEs by Patients' Age

0 - 4	11,818	5.3%
5 - 14	8,377	3.7%
15 - 24	13,058	5.8%
25 - 44	35,939	16.0%
45 - 64	48,191	21.4%
65 - 74	40,715	18.1%
75 - 84	41,764	18.6%
85 & Over	24,866	11.1%
Not known	42	0.0%

### FCEs and Average Bed days by Broad Specialty Groups (the specialty under which the patient is treated<sup>1</sup>)

	<b>FCEs</b>	<b>Bed days</b>
<b>All Specialties</b>	<b>146,057</b>	<b>5.4</b>
All Non-Psychiatric Specialties Excluding Geriatrics	132,995	4.1
All Non-Psychiatric Specialties	143,996	4.9
All Psychiatric Specialties	2,042	44.8
Acute	127,888	4.2
Maternity	5,106	1.5
Geriatrics	11,001	14.8
Mental Illness	2,019	38.2
Learning Disability	23	631.2

### Private Patients Treated in NHS Hospitals

FCEs (all patient classifications)	970	0.4%
------------------------------------	-----	------

### Delivery Episodes<sup>2</sup>

FCEs: Mothers giving birth (all patient classifications)	6,031	2.7%
--	-------	------

### FCEs in Spell Breakdown

1 episode only	88.0%
2 episodes	9.4%
3 episodes	2.0%
4 or more episodes	0.6%

**Admission Episodes (only the first episode of care in each hospital stay is counted).**

<b>Total</b>			<b>193,695</b>	<b>100.0%</b>
	Inpatient	Daycase		
<b>Elective admission episodes</b>	17,317	69,183	<b>86,500</b>	<b>44.7%</b>
Waiting List	12,004	51,985	63,989	
Booked	1,922	7,669	9,591	
Planned	2,370	9,529	11,899	
Other Elective Admissions (transfers)	1,021	0	1,021	
<b>Emergency admission episodes</b>			<b>92,832</b>	<b>47.9%</b>
A&E			55,511	
GP			21,719	
Other Emergency			15,602	
<b>Other admission episodes (including maternity)</b>			<b>14,363</b>	<b>7.4%</b>

**Discharge Episodes (only the last episode of care in each hospital stay is counted)**

<b>Total</b>	<b>193,935</b>	<b>100.0%</b>
Deaths in hospital (including stillbirths)	3,837	2.0%

**Discharge Episodes (inpatients only) and Average Length of Stay by Broad Specialty Groups (the specialty under which the patient is treated<sup>1</sup>)**

	Elective		Emergency		Other <sup>3</sup>		All Admissions	
	FCEs	LOS	FCEs	LOS	FCEs	LOS	FCEs	LOS
<b>All Specialties</b>	<b>17,327</b>	<b>6.3</b>	<b>93,056</b>	<b>7.0</b>	<b>5,775</b>	<b>3.0</b>	<b>116,158</b>	<b>6.7</b>
All Non-Psych Spec. excl. Geriatrics	16,300	3.9	83,445	5.4	5,765	3.0	105,510	5.0
All Non-Psychiatric	17,254	5.6	91,413	6.5	5,769	3.0	114,436	6.1
All Psychiatric Specialties	56	209.4	1,643	40.3	6	**	1,705	46.0
Acute	16,242	3.9	82,984	5.4	1,193	8.5	100,419	5.2
Maternity	58	2.3	460	1.0	4,572	1.5	5,090	1.5
Geriatrics	954	34.6	7,968	17.5	4	**	8,926	19.3
Mental Illness	46	196.0	1,640	40.3	6	**	1,692	44.6
Learning Disability	10	271.3	3	**	0	-	13	226.8

**Betsi Cadwaladr ULHB Residents Treated in Non-Welsh Providers**

FCEs	34,551	15.4%
Admission Episodes	29,147	15.0%

**\*Regular Day and Night Attender Episodes (these episodes have not been included elsewhere)**

<b>Total</b>	<b>32,582</b>
--------------	---------------

[1] In publications prior to 2012/13, the consultants main specialty was used for all specialty figures in the headlines publication. From 2012/13, to comply with current best practice and to match other publications, this was changed to the specialty under which the patient was treated. This means that specialty figures prior to 2012/13 will not be comparable to specialty figures provided for 2012/13 onwards in the headlines publication. Please refer to the NHS Wales data dictionary <http://www.datadictionary.wales.nhs.uk> for definitions.

[2] Please note that the definition for delivery episodes changed from the 2012/13 publication onwards, therefore the data will not be comparable to previous years.

Please see the Notes and Definitions document accompanying this release for further information.

Please note, percentage breakdowns may not always add up to 100% due to rounding.

[3] Other refers to any other type of admission method other than elective or emergency (includes maternity admissions).

\*\*Calculated values such as average length of stay or average beddays are not provided where based on less than 10 values

	Finished Episodes	Admissions	Male	Female	Emerg	Waiting List	Waiting Time		Length of Stay		Mean Age	Inpatient	Day Case
							Mean	Median	Mean	Median			
<b>Procedures (main)</b>													
Cataract	5,656	5,653	42%	58%	0%	90%	277.3	133.0	1.0	1.0	75	1%	99%
Upper digestive tract	10,896	10,252	49%	51%	7%	83%	148.6	33.0	11.0	5.0	61	17%	83%
Heart (CABG)	177	147	83%	17%	34%	58%	39.0	27.0	11.6	9.0	68	100%	0%
Heart (PTCA)	852	769	73%	27%	73%	24%	46.7	39.0	2.2	1.0	66	96%	4%
Hip	1,896	1,843	39%	61%	31%	63%	323.7	207.0	6.8	4.0	73	100%	0%
Knee	1,164	1,159	45%	55%	1%	93%	385.9	272.0	4.4	4.0	71	100%	0%
Kidney transplant	26	26	73%	27%	31%	42%	11.5	0.0	9.8	9.0	48	100%	0%
<b>Diagnosis (anywhere in admitting episode)</b>													
Sepsis	5,916	3,505	52%	48%	92%	2%	99.1	31.0	15.3	8.0	69	99%	0%